

# Mont Saint-Michel circuit

Région de Saverne - Saint-Jean-Saverne



(OT Pays de Saverne)



*This circuit for the whole family allows to discover Celtic, Gallo-Roman and medieval remains.*

A journey through past eras thanks to many vestiges: oppidum celte, Roman road, 12th century castle and many other discoveries! Mont Saint-Michel also allows you to admire a beautiful view of the municipality of Saint-Jean Saverne that dominates.

## Useful information

Practice : Walking

Duration : 2 h 30

Length : 8.6 km

Trek ascent : 179 m

Difficulty : Easy

Type : Loop

Themes : Histoire & patrimoine, Point de vue, Château église abbaye

# Trek

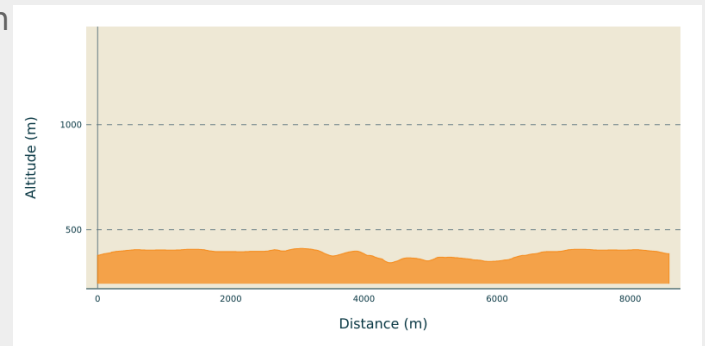
**Departure** : Mont Saint-Michel, Saint-Jean Saverne

**Arrival** : Mont Saint-Michel, Saint-Jean Saverne

**Markings** :  Club Vosgien

**Cities** : 1. Saint-Jean-Saverne  
2. Ernolsheim-lès-Saverne

## Altimetric profile



Min elevation 343 m Max elevation 411 m

From the car park, go to Mont Saint-Michel.

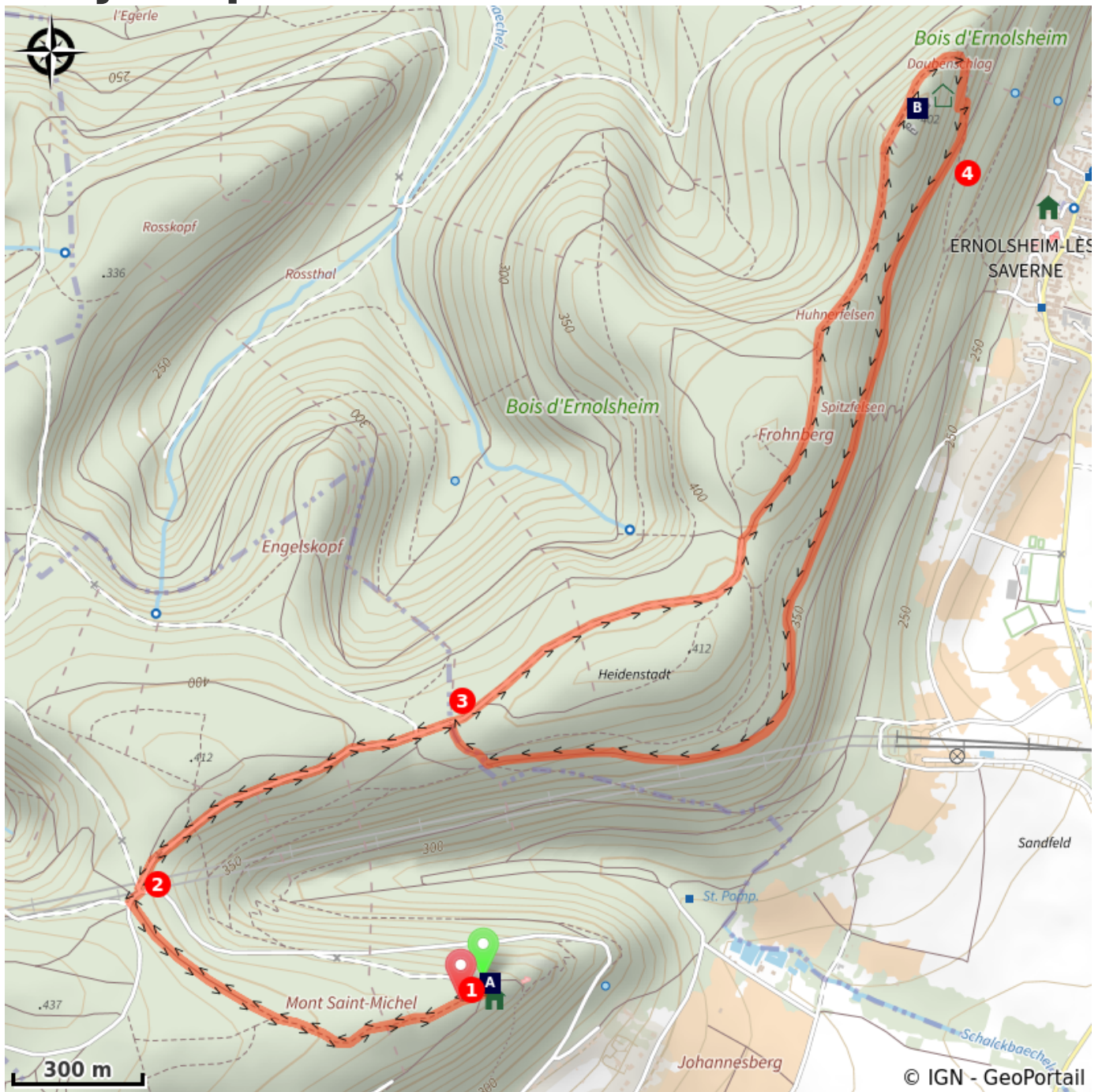
Take the forest path to the Langenthal Cross. Throughout the course, follow the red disc.

Continue on the path of Heidenstadt to join the Celtic Oppidum. Then join the quarry of Frohnberg from which were extracted the stones used for the construction of the castle.

Continue towards Warthenberg Castle. Once there, go round the castle and look at the rock of the Daubenschlag.

Follow the path of the philosopher and go up the Roman road of Plattenweg then cross the forest road to reach Mont Saint-Michel.

# On your path...



 Saint-Michel Chapel (A)

 Warthenberg Chateau (B)

# All useful information

## **Advices**

Carte IGN : 3715 ET

## **How to come ?**

### Transports

Uniquement accessible en voiture.

### Access

From Saverne, take the D115 towards Saint-Jean Saverne. At Saint-Jean Saverne, follow the signs to Mont Saint-Michel.

### Advised parking

Parking du Mont Saint-Michel, Saint-Jean Saverne

## **Information desks**

### **Tourist Office of the Pays de Saverne**

37 Grand'rue, 67700 Saverne

[contact@tourisme-saverne.fr](mailto:contact@tourisme-saverne.fr)

Tel : +33 (0)3 88 91 80 47

<http://www.tourisme-saverne.fr/>



# On your path...

---

## Saint-Michel Chapel (A)

It would be an ancient pagan place of worship, consisting of a circular basin called the School of Witches or Circle of Druids and a cave below called Cave of the Fairies. According to some authors, it would correspond to a Roman era shrine dedicated to Mithra. The cave with benches was occupied from the late Middle Ages until the 18th century by hermits from where the presence of amenities. (Sources: Mérimée)

---

## Warthenberg Chateau (B)

A Roman fortress built in the 12th century, also known as the Daubenschlag Castle, the name of the rock on which it was built. The castle was quickly abandoned, perhaps even before being completed. It was not lost for everyone, however, as the surrounding inhabitants used it as a stone quarry.